

CORAL REEFS & COASTAL COMMUNITIES

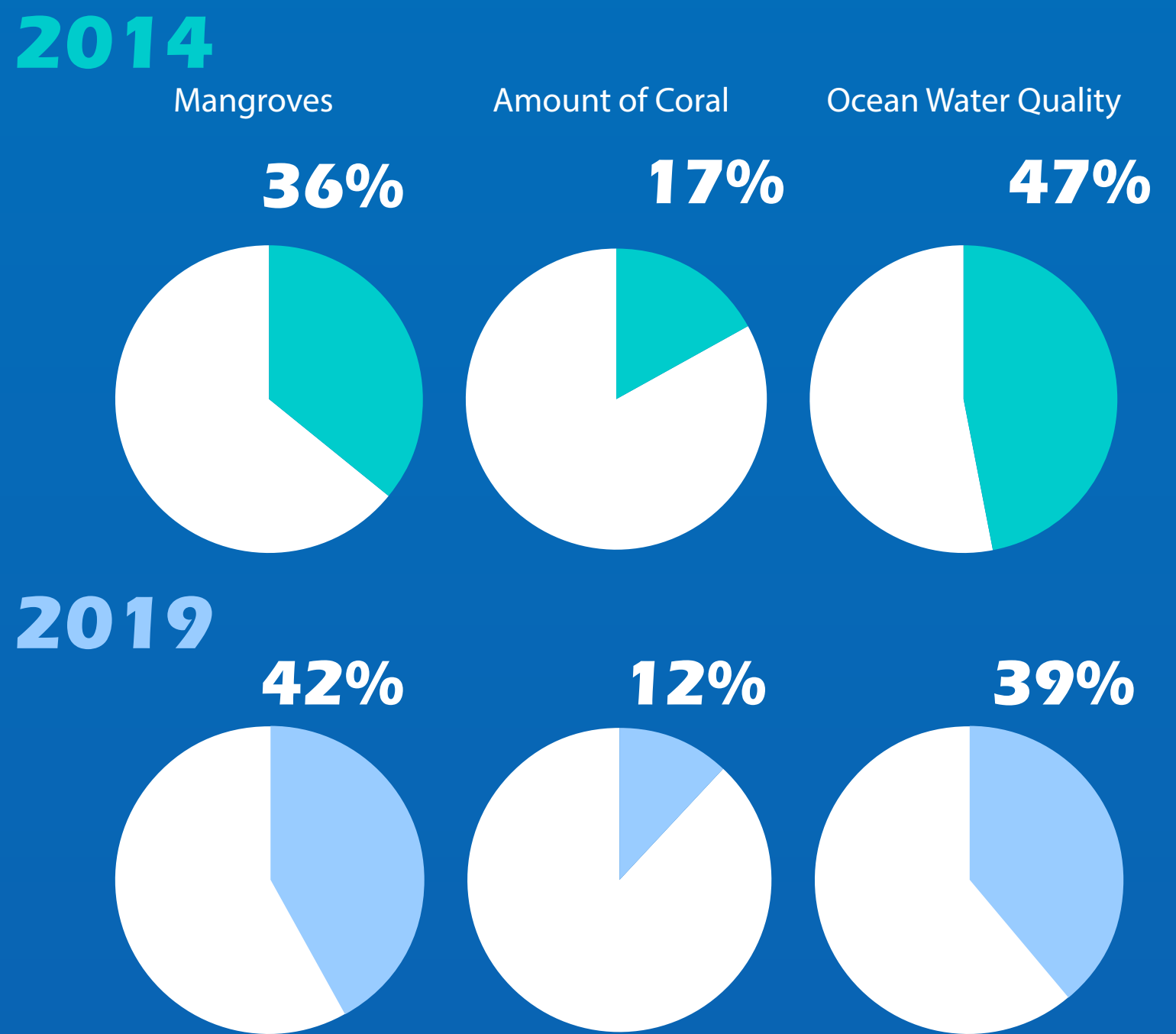
Trends from Socioeconomic Surveying in South Florida

NOAA's Coral Reef Conservation Program monitors the biological, socioeconomic, and climate conditions of U.S. coral reefs and communities through the National Coral Reef Monitoring Program (NCRMP). The Socioeconomic Component of the NCRMP collects and monitors knowledge, attitudes, and perceptions of coral reefs and coral reef management, human use of coral reef resources, and demographics of the populations living in coral reef areas. The trends shown below are based on survey results between South Florida's first (2014) and second (2019) monitoring cycles conducted in Martin, Palm Beach, Broward, Miami-Dade, and Monroe Counties.



Current Condition

Residents were asked how they perceived the current condition of certain marine resources in South Florida. The percentage of residents who believed the resource is good or very good is shown below.



Key Takeaway ←

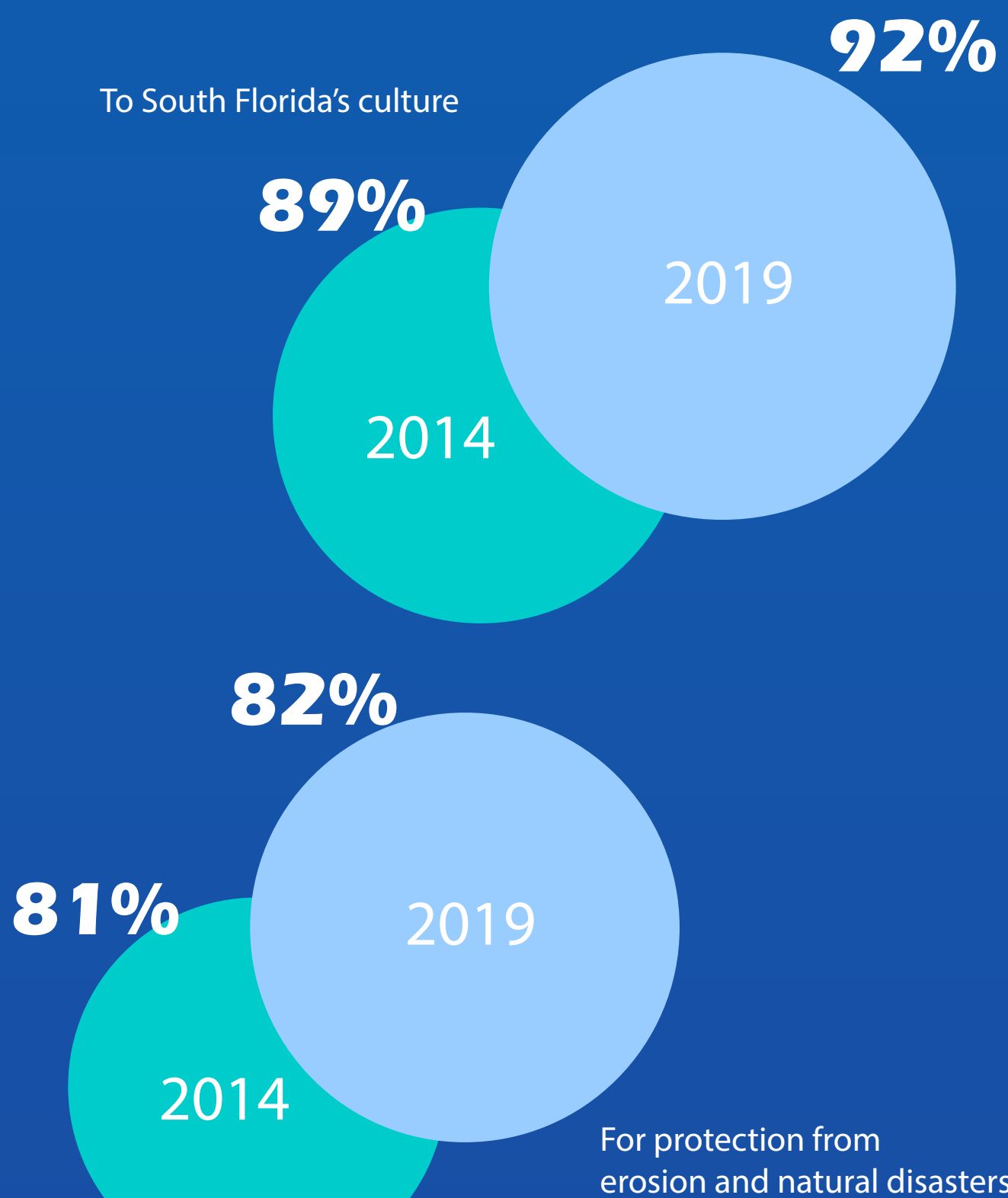
More residents believed amount of coral and ocean water quality are getting worse, while mangroves are improving

Importance of Coral Reefs

Residents were asked whether they agreed that coral reefs are important to a series of items. The percentage of residents who agreed or strongly agreed is shown below.

Key Takeaway ←

The percentage of residents who believed coral reefs are important to South Florida's culture increased

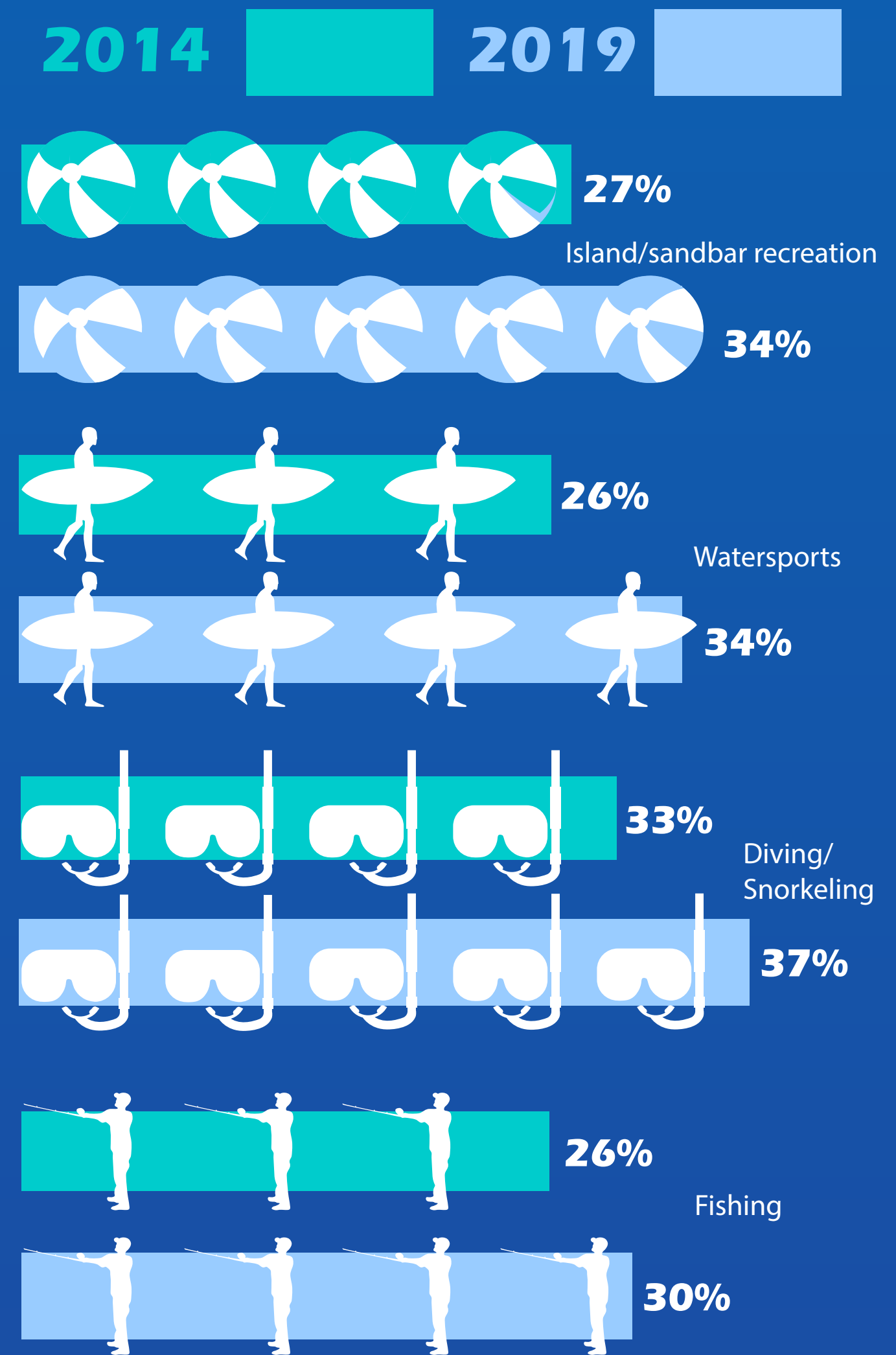


→ Key Takeaway

The percentage of residents who believed coral reefs are important for protecting against erosion and natural disasters slightly increased

Activity Participation Rates

Residents were asked for their participation in a list of marine recreational activities. Activity participation rates for some of these activities are shown below.



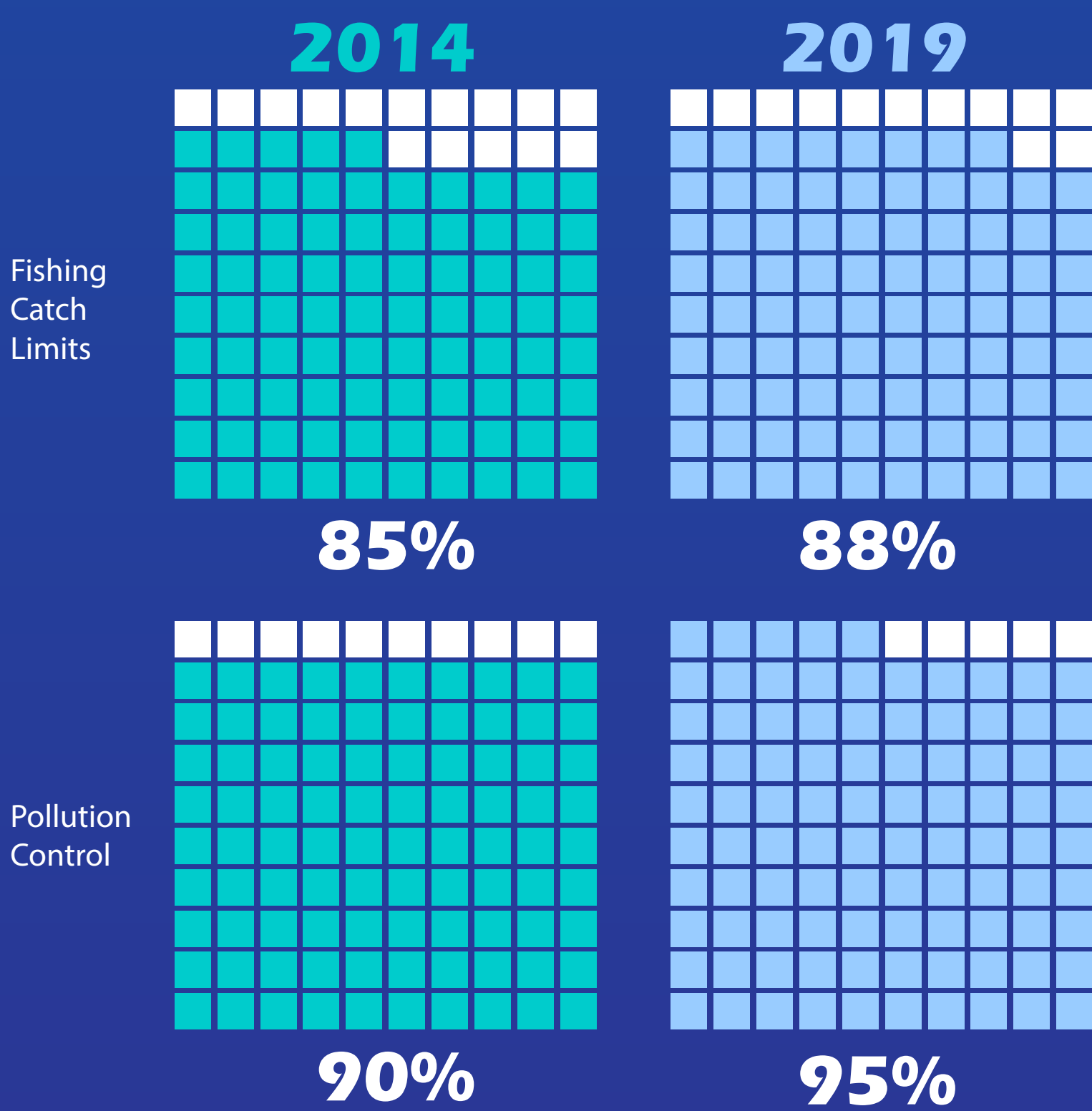
Key Takeaway ←

Participation in island/sandbar recreation, watersports, diving, snorkeling, and fishing has increased

63% of residents felt the condition of marine resources will get worse, an increase of 11%

Support for Management

Residents were asked the extent to which they oppose or support various management strategies. The percentage of residents who supported or strongly supported is shown below.

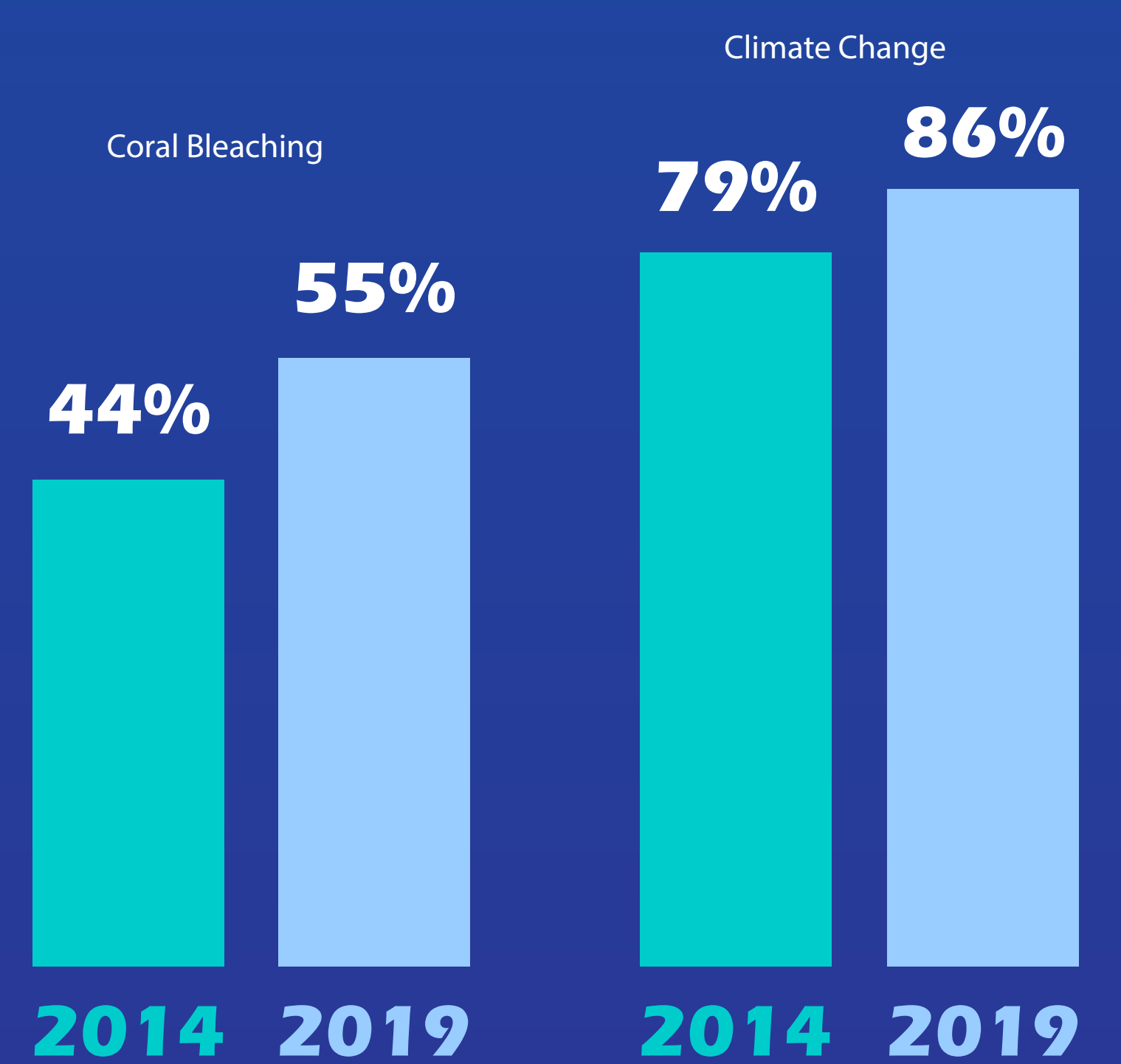


→ Key Takeaway

Support for the use of fishing catch limits and pollution control has increased

Threat Familiarity

Residents were asked for their familiarity with potential threats to coral reefs. The percentage of residents who were familiar with two of those threats is shown below.



Key Takeaway ←

Most residents remain familiar with threats to coral reefs, and have become more familiar with coral bleaching and climate change

All numbers have been rounded to the nearest full number. Telephone surveys of residents aged eighteen and older within Martin, Palm Beach, Broward, Miami-Dade, and Monroe Counties were conducted in 2014 and 2019 (offered in English and Spanish). A total of 1,210 surveys were completed in 2014 with a response rate of 12.0%, and a total 2,201 surveys were completed in 2019 with a response rate of 13.9%. All survey results were weighted for regional representation.

For more information, please see the NCRMP Socioeconomic Component project page at: <http://www.coris.noaa.gov/monitoring/socioeconomic.html>.

